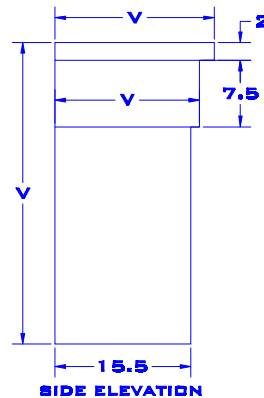
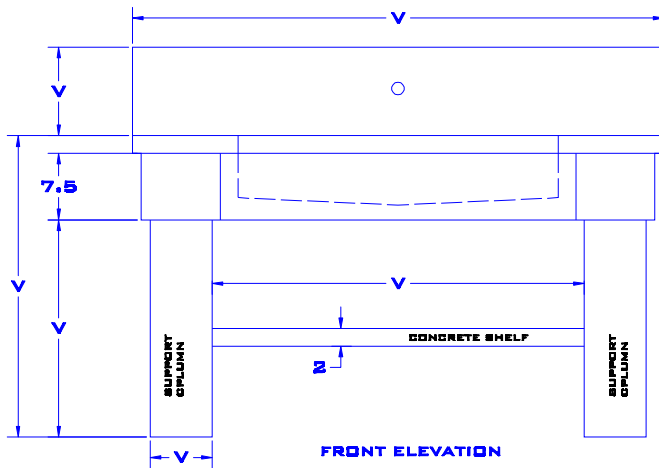
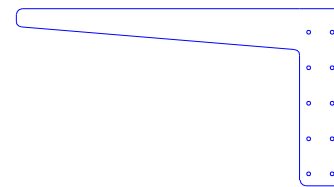
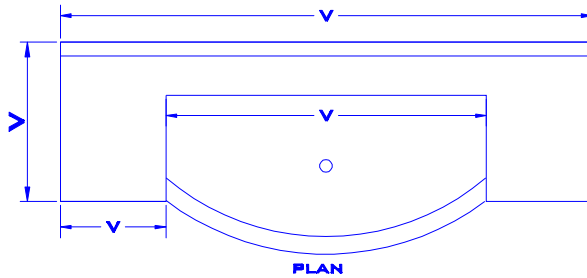




S O U P C A N

ROMAN

ROMAN: A MODIFIED TROUGH DESIGN WHERE SIMPLE EMBELLISHMENT RECALL ARCHITECTURAL DETAILS; A STANDARD DRAIN CONFIGURATION IS FEATURED ON THE TROUGH. ROMAN IS CONFIGURED AS A SINGLE TROUGH DESIGN (UP TO 10 FT. IN LENGTH). TYPICALLY, WE MANUFACTURE THIS SINK WITH A COMPLIMENTARY CONCRETE COLUMN BASE WITH ACCESSORY SHELF. IN ADDITION TO COLUMN MOUNTING, ROMAN CAN BE CABINET MOUNTED OR WALL MOUNTED (WITH OUR 3/8" PLATE STEEL BRACKET).



**PICTURED ABOVE:
WALL MOUNT FAUCET SETUP (THROUGH OPTIONAL BACKSPASH)
STANDARD DRAIN CONFIGURATION
CUSTOMIZATION: LENGTH, WIDTH, HEIGHT
INTENDED INSTALLATION: COLUMN (OPTIONAL), WALL, OR CABINET MOUNTED**